



**AQUA PUR**

Traitement Des Eaux

CATALOG 4



# Info Sheet BRINE TANKS & CABINETS

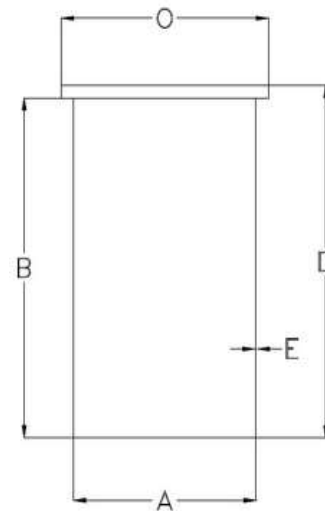
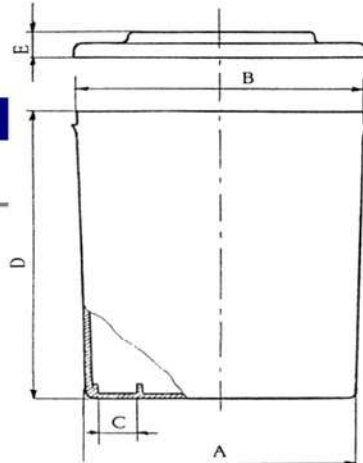
## BRINE TANKS

### TANKS

#### Injection Moulded Brine tanks (IM)

Article number	Vol.	A	B	C	D	E
0801.BTI100WI	100 L	440	467	100	630	50
0801.BTI150WI	150 L	500	530	100	750	50
0801.BTI200WI	200 L	490	530	100	1000	50

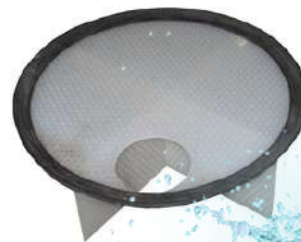
dimensions in mm



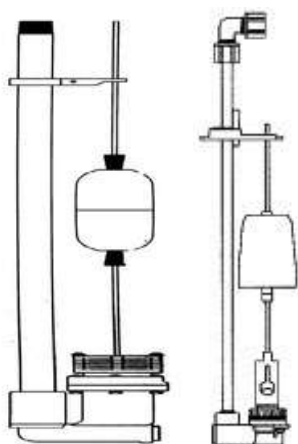
### OPTIONS



Salt grid for brine tanks  
100 L, 150 L and 200 L



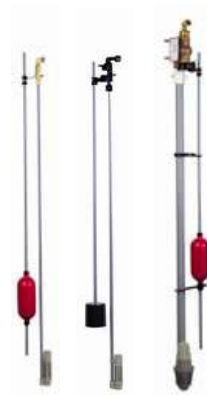
Salt grid for brine tanks  
200 L to 1500 L



	454 HF	464
Max. temp	50°C	50°C
Max. press	8 bar	8 bar
Max. draw	38 L / min.	3,8 L / min.
Max. fill	38 L / min.	1,3 L / min.

Brine valve 454 High Flow excl. riser tube(left)  
Brine valve 464 (right)

Safety Brine Valves  
(from left to right) SBV 2300, SBV 2310, SBV 2350



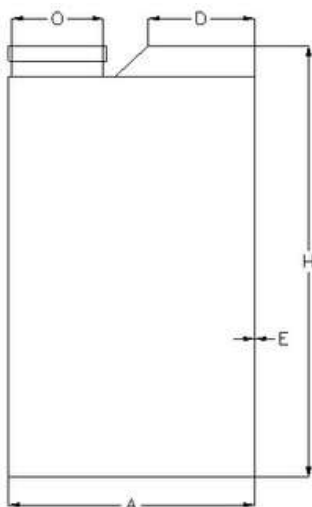
### SALT GUARD



### SENSO



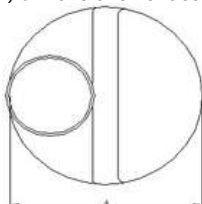
## STORAGE TANKS



Article number	Vol.	A	H	O D E
0802.ST0060	60 L	440	560	130 1903,5
0802.ST0120	120 L	470	770	225 1655,0
0802.ST0200	200 L	555	930	225 2505,5
0802.ST0300	300 L	660	105	225 3505,5
0802.ST0500	500 L	780	0	225 4006,0
0802.ST0850 *	850 L	100	117	400 -7,0
		0	0	
			125	
			0	

(\* ) dimensions not according drawing

dimensions in mm



# CABINETS



EuroCompact® High Cover  
MEDIUM

Microcompact® NAUTILUS  
(For 6x13 – 7x13)



Microcompact® BINGO  
(For 6x13 – 7x13 – 9x13)



Madison® High Cover LARGE



Elegant® High Cover



Luxury® MAXI



Evolution® MAXI



Wave®

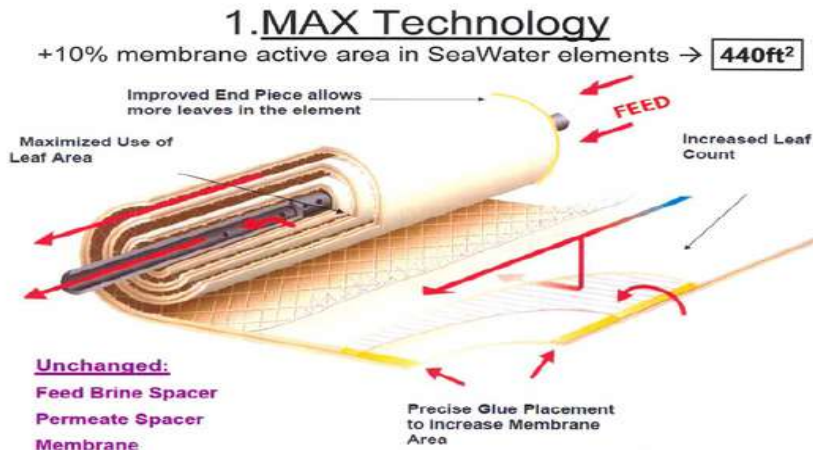


# Info Sheet MEMBRANES

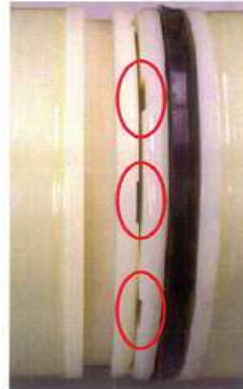
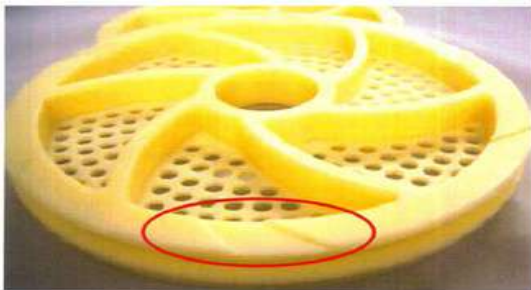
## NEW HYDRANAUTICS ADVANTAGES

Choosing your membranes HYDRANAUTICS

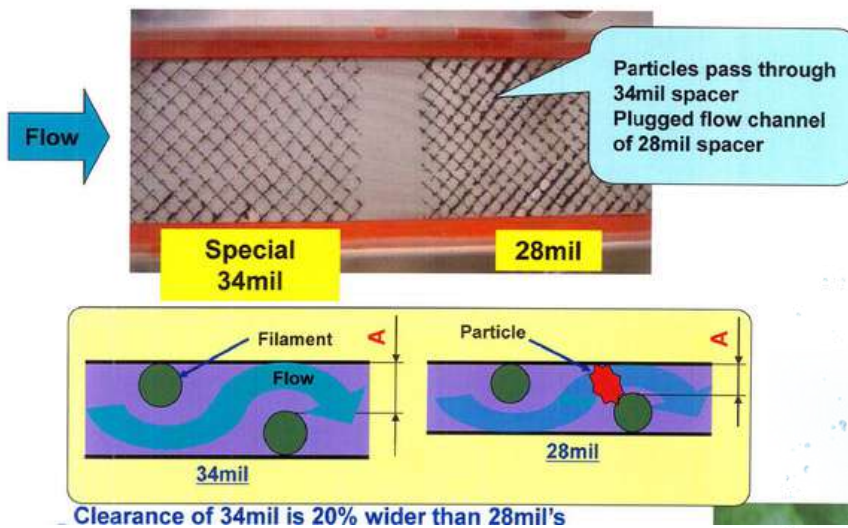
Max Technology - 440 ft<sup>2</sup> instead of 400 ft<sup>2</sup>



Anti-Telescoping Device (ATD) design : Reduced risk of element damage !



LOWER DIFFERENTIAL (LD) technology



# Why LD Technology?

1. **Thicker Spacer with Modified Geometry**
  - Lower Differential pressure reduces power consumption, saving energy costs and decreasing the carbon footprint of the system.
2. **Chemically Enhanced Feed Spacer**
  - Less biofouling leads to fewer cleanings which decreases the maintenance costs of chemicals, labor, and waste disposal associated with CIP procedures.
3. **Improved Membrane Chemistry**
  - Longer Membrane life decreases the effective replacement costs for the membrane.
  - Increased silica and hardness rejection reduces long term maintenance costs and increases the operating life of other high price system components located downstream.



Front: membrane with old Seal Carrier (male)

Back: membrane with new 'Flush Cut' Seal Carrier (female)

## OLTREMARE COMPACT® – Membranes

For a fast and easy installation...

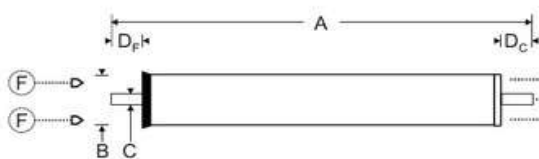
COMPACT® – membranes  
=  
pressure vessel + membrane



## OLTREMARE LOW XL® – Membranes

### Dimensions

A Total Length	B ATD Diameter	C Connection Diameter	D <sub>F</sub> Core Tube Extension Feed Side	D <sub>C</sub> Core Tube Extension Conc. Side	Weight
40.0 inches (1016 mm)	3.95 inches (100,3 mm)	0.75 inches (19,1 mm)	1.05 inches (26,7 mm)	1.05 inches (26,7 mm)	8 lbs (3,6 Kg)



(P) Permeate  
(F) Feed  
(Cn) Concentrate

# Info Sheet PRESSURE VESSELS

## CODELIN

### E



Codeline Ø 4 " Pressure vessel  
END PORT



Codeline Ø 8 " Pressure vessel  
END PORT



# SIDE PORT



Codeline Ø 8 " Pressure vessel  
SIDE PORT



END PORT installation

## END PORT

Simple solution for small installations  
Lower purchase costs of pressure vessels

## SIDE PORT

Easy access to membranes  
Results in lower maintenance cost  
Lower piping costs



SIDE PORT installation



80H series - with 3" ports



80U series - with 4" ports



## OLTREMARE STAINLESS STEEL



Oltremare Ø 4 " Pressure vessel STAINLESS STEEL  
END PORT

## WAVE CYBER



## COUPLINGS

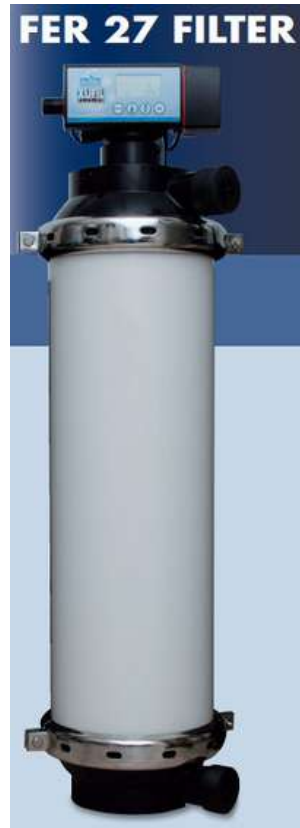


Victaulic 75  
Coupling complete with EPDM gasket, nuts and bolts in steel plated

Victaulic 77



# ULTRA FILTRATION



# MICRO FILTRATION



**AquaLine** Micro Filtration housings



# Info Sheet UV Units

## LCD SERIES



## RACK LCD SERIES



## RM SERIES



## AM SERIES



# Sel Vacuum Pastilles Enisal Pro



Formats  
25 Kg

Analytical Data	Value Type	Typical Values	Specifications
NaCl Level (in dry basis)	% m/m	99,5	≥ 99,0
Humidity	% m/m	0,05	< 0,2
Water - Insoluble Matter	mg/kg	150	< 250
Acid- Insoluble Matter	mg/kg	100	< 200
Alkalinity	mg/kg	100	< 1.000
Sulfate	mg/kg	3000	< 3.200
E535, Anticaking Agent	mg/kg	12	8-17
Potassium iodate ( KIO3)	mg/kg	-	-
Total Calcium	mg/kg	1.100	< 1.300
Total Magnesium	mg/kg	450	< 500
Total Potassium	mg/kg	178	< 500
Total Lithium	mg/kg	<1,471	< 10
Total Barium	mg/kg	Not detected	< 1

# FILTER MEDIA



Range of Filter Media

Datasheets are available upon request.

